

TIDOMAT smartONE 2

Start Guide



smartONE

© 2008 Tidomat AB. All rights reserved.

No part of this publication may be reproduced, stored in a retrieval system, or transmitted, in any form by any means, electronic, mechanical, recording or otherwise, without the prior written permission of Tidomat AB.

The content of this publication is furnished for informational use only. Data subject to change without notice and should not be construed as a commitment by Tidomat AB.

TIDOMAT, the TIDOMAT logo, smartONE and the smartONE logo are registered trademarks of Tidomat AB. All other trademarks are the property of their respective owners.

www.tidomat.se
info@tidomat.se
dok.no. 01080011-0848
© 2008 Tidomat AB

CONTENT

General information.....	3
Overview of smartONE	3
Commissioning	4
Login to the System	4
Changing the Password.....	4
Configuring the Access Points.....	4
Creating a new Cardholder.....	5
Connect new Card/tag.....	5
Instructions for connecting the Central Unit.....	6
Overview of the connections for the Central Unit.....	8

General information

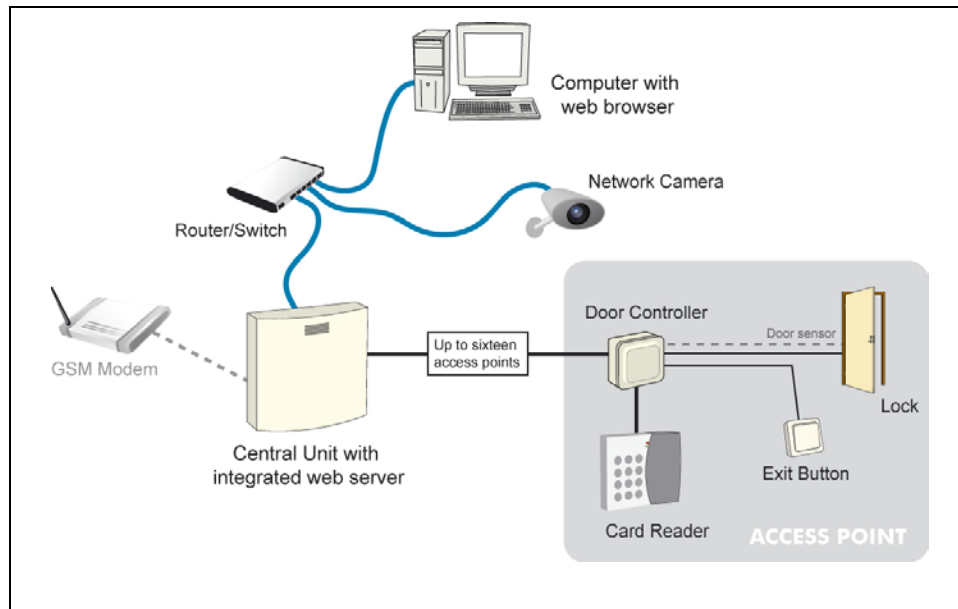
TIDOMAT smartONE is commissioned when all units are situated at the correct location. The contact between the computer and the Central Unit is to be established. These Access Points are to be configured in the system.

*To see the **Instructions for connecting the Central Unit**, please go to page 6.*

Requirements for new installation of smartONE:

- A computer with a **TCP/IP** connection. A Local Area Network, **LAN** connected to at least one computer.
- One network output, **RJ45** for each Central Unit.
- One **IP-address** for each Central Unit.
- One **DHCP-server** or information regarding the **Subnet mask**, **Broadcast** and **Standard-gateway** of the network.

Overview of smartONE



Commissioning

One or several Door Controllers are connected to the Central Unit, and thereafter configured in the user interface. The Central Unit is to be connected to the network. The current consumption should be 24 VDC or 12 VDC regulated voltage. In the following example, the Door Controller is connected to Connector P1. Further Door Controllers can be commissioned once the system is up and running.

The label underneath the chassis of the Central Unit displays an Internet address:



Connect to the Central Unit by opening the web browser and state the Internet address in the field:



Login to the System

On the initiating page, the following window appears:



1. Type **User: system**.
2. Login with the **Password: smart**.

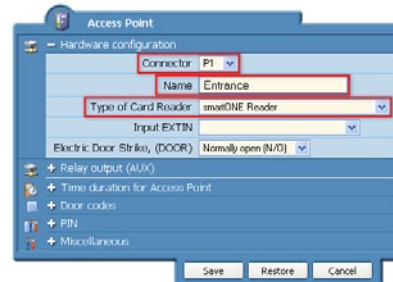
Changing the Password

Change the default password to a personal one. It is recommended to have a password of at least six characters of which at least two are numbers.

1. Click on **User>Password**.
2. Type the **Password** you used to login.
3. Type your **New Password**.
4. Confirm you **New Password** and click on **Save**.

Configuring the Access Points

In order to configure the Access Points, please go to **Access Points>New**. The following window appears:



State the connector for **P1-P8** or **P1-P16**, depending on the model of the Central Unit.

1. Give the **Access Point** a name.
2. Select the **Type of Card Reader**.
3. Click on **Save**.

Further settings and functions can be selected later. Instructions and explanations are enclosed in the help files of the system as well as in *Access Points*, *Appendix I* in the *TIDOMAT smartONE User Manual*.

Creating a new Cardholder

The Cardholders are administrated in the **Admin-layer**. Open smartONE via the web browser, or if the user is logged in to the **System-layer**, click on **Logout** in the right hand corner. Enter **admin** for the user and **admin** for the password to login.

In the menu, go to **Cardholder>New**. The following window appears:


1. State the Cardholder's **First name**.
2. State the Cardholder's **Surname**.

Connect new Card/tag

Via the USB Reader:


1. By the header **New Card/tag**, place the cursor in the field on the right.
2. Hold the **Card/tag** in proximity to the **USB-reader**. The Card data will appear in the field.
3. The field to the left is for your personal choice of the **Card identification**.
4. Click on **Save**.

Via the Card Reader:

1. Hold the **Card/tag** in proximity to the Card Reader.
2. When the Card Reader has registered the **Card/tag**, a red light will flash. Return to the user interface.
3. Click on the button **List new Card/tag** .

Card/ tag	Access Point	Date and time
00055837425611	Entrance	Monday 01:32:01pm

The list displays the ten latest unknown Cards/tags registered, the Access Point to which the Card Reader is connected as well as at what time the cards/tags where registered.

4. Click on the orange button, **Update card/tag** .
5. Wait for the **data** of the **Card/tag** to be displayed in the field.
6. Select the **Card/tag**.

7. The field to the right behind the header **New Card/tag** displays the Card/tag data. The field to the left of the Card/tag data is for your personal choice of the **Card identification**. You can use letters and/or digits. If you do not wish to use the Card identification, please leave the field blank.
8. Click on **Save**.

The security system smartONE is ready to be used. Information on how to use functions such as Schedules, Time Channels and Triggers is enclosed in the **TIDOMAT smartONE User Manual** and the help files. In order to close the system, please click on **Logout** in the right hand corner, or close the web browser.

Instructions for connecting the Central Unit

The Exit button should be closed circuit (NO).
The current consumption should be 24 VDC or 12 VDC regulated voltage. The Electric Door Strike is supplied with the same voltage as the Central

Unit, 24 VDC or 12 VDC. The current consumption of the Electric Door Strike must not exceed 500 mA.
To see the Overview of the Connections for the Central Unit, please go to page 8.

The Central Unit SO-3008			
Terminal	Pin	Description	
P1 - P8	1	0 VDC	Connects to the Door Controller (1PWR)
	2	+12/+24 VDC	Connects to the Door Controller (2PWR)
	3	+COM	Connects to the Door Controller (+COM)
	4	-COM	Connects to the Door Controller (-COM)
	0V	Regulated voltage IN 0 VDC	
	+12V +24V	Regulated voltage IN +12 VDC alt. 24 VDC	
10/100 BaseT		Network Connection, Ethernet 10/100 Mbit/s (Autonegotiation)	
COM		GSM-modem, special cable for smartONE	

The Expansion Card			
Terminal	Pin	Description	
P9 – P16	1	0 VDC	Connects to the Door Controller (1PWR)
	2	+12/+24 VDC	Connects to the Door Controller (2PWR)
	3	+COM	Connects to the Door Controller (+COM)
	4	-COM	Connects to the Door Controller (-COM)
	0V	Regulated voltage IN 0 VDC	
	+12V +24V	Regulated voltage IN +12 VDC alt. 24 VDC	

The Door Controller SO-3301		
Pin	Description	
EXT IN1	External Input	
EXT IN1		
EXIT1	Exit Button (NO)	
EXIT2		
DOOR+	Electric Door Strike +	
DOOR-	Electric Door Strike -	
AUX1	Relay (NO eller NC)	
AUX2		
DATA	Communication	Connects to the Card Reader (DATA)
CLK	Communication	Connects to the Card Reader (CLK)
+5V	Voltage UT	Connects to the Card Reader (+5V)
0V	Voltage UT	Connects to the Card Reader (0V)
-COM	Communication	Connects to the Central Unit (4)
+COM	Communication	Connects to the Central Unit (3)
2PWR	Voltage IN	Connects to the Central Unit (2)
1PWR	Voltage IN	Connects to the Central Unit (1)

The Card Reader		
Pin	Description	
0 VDC	Voltage IN	Connects to the Door Controller (0V)
+5 VDC	Voltage IN	Connects to the Door Controller (+5V)
Clk	Communication	Connects to the Door Controller (CLK)
Data	Communication	Connects to the Door Controller (DATA)

Overview of the connections for the Central Unit

